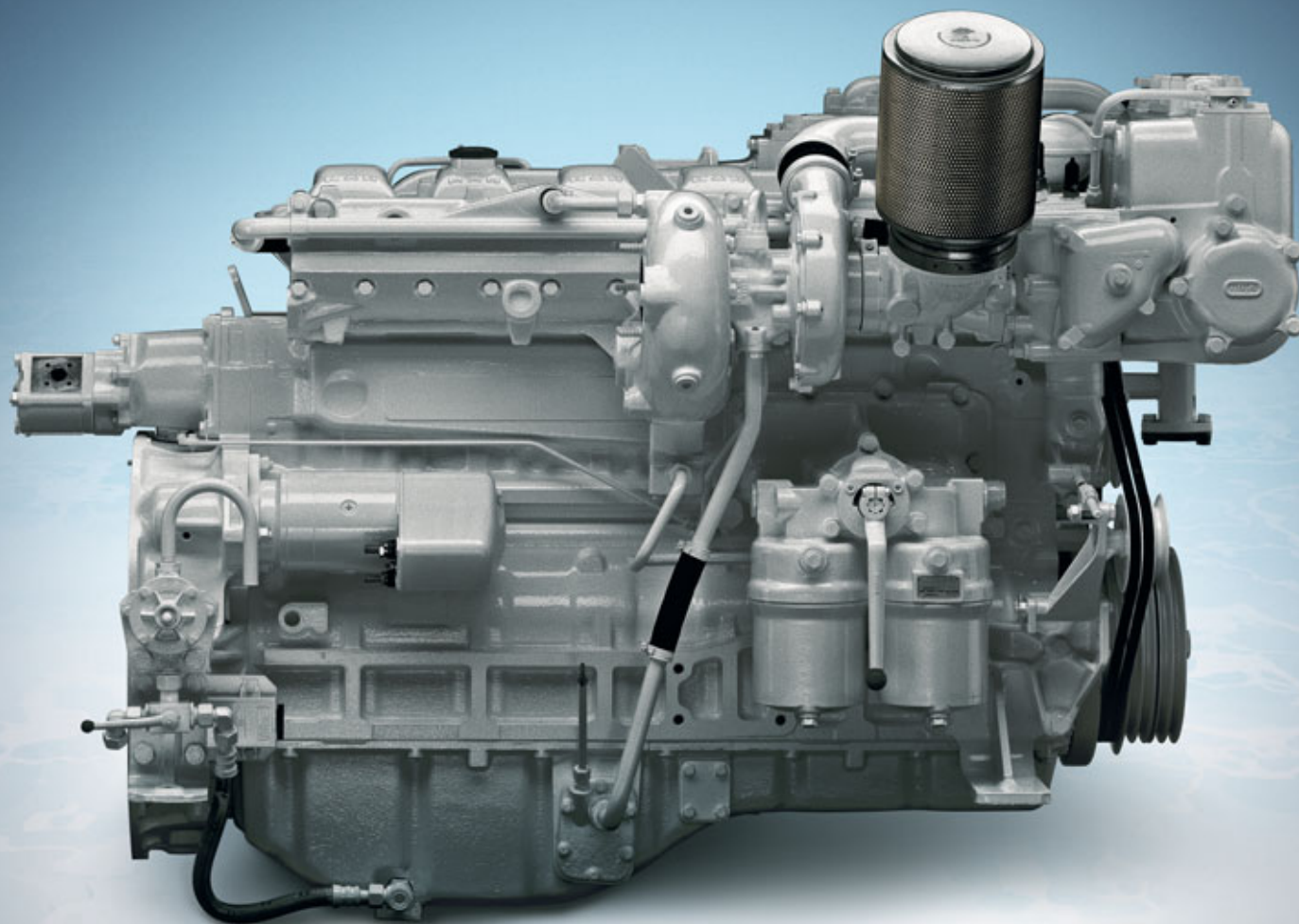


D2866



MAN high speed marine engines
for heavy duty applications.

Engineering the Future – since 1758.

MAN Nutzfahrzeuge



Full speed ahead.

Typical applications for marine heavy duty operation cover passenger and goods transportation as well as escort and patrol duties at sea. MAN marine diesel engines from 258 mhp to 900 mhp perform these tasks reliably and efficiently. They meet the international current emission standards and are environmentally friendly. The worldwide service network ensures minimal maintenance effort and a customer-oriented service.

Engine description D2866.

Characteristics

Cylinders and arrangement	6 cylinders in-line
Operation mode	watercooled 4-stroke diesel engine with exhaust turbocharger and intercooler
Number of valves	2 valves per cylinder, replaceable
Fuel injection	Direct injection
Fuel system	Bosch injection pump
Engine block	High-strength casting with integrated oil and water ducts and replaceable cylinder liners
Engine lubrication	Closed system with forced feeding, oil cooling and filtering
Type of cooling	Heat exchanger with seawater pump fitted alternatively equipment for keel cooling
Exhaust gas status	IMO Tier 2, 97/68/EC On request: SAV and BSO for commercial application
Fuel	DMX fuel to ISO 8217, EN 590

Dimensions D2866

		LXE40
A-Overall width of engine	mm	897
B-Overall length of engine	mm	1,448
C-Overall height of engine - flat oil pan	mm	1,148
- deep oil pan	mm	1,357
D-Top of engine to crankshaft centre	mm	817
E-Length of engine from front end to edge of flywheel housing	mm	1,448
Average weight of engine ready for installation (dry)	kg	1,020

For detailed examinations of installation dimensions, please order drawings from our factory.

MAN engines have outstanding qualities

- High tractive power even at low speeds
- Powerful acceleration and rapid reaction to commands
- High performance combined with low weight
- Compact, space-saving design
- Low emission values
- High efficiency owing to low fuel consumption, low running costs and long service life
- World-wide service network with rapid supply of spare parts

Technical data D2866

Type of engine		LXE40	LXE40
Bore	mm	128	128
Stroke	mm	155	155
Displacement	l	11.97	11.97
Compression ratio		15.5:1	15.5:1
Rotation looking on flywheel		left	left
Flywheel housing		SAE1	SAE1
Nominal rating ¹			
	kW (mhp)	190 (258)	279 (379)
Rated speed	rpm	1,800	1,800
Torque at rated speed	Nm	1,008	1,480
Maximum torque	Nm	1,070	1,564
at speed	rpm	1,400	1,500
Specific fuel consumption ²	g/kWh	210	206
Fuel consumption ²	l/h	48	69
Classifiable		√	√

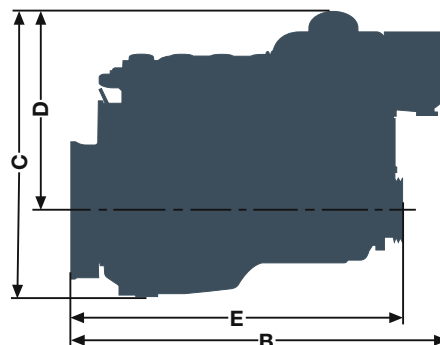
¹ The rating is according to DIN ISO 3046/1. ² Consumption at rated power.

Definition of heavy duty operation

Annual operating hours	> 3,000
Percentage of time at full load	≤ 100%
Average load application	≤ 100%

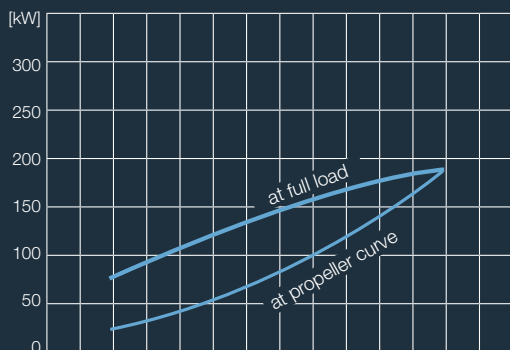
Typical applications

Trawlers
Tugs and pushboats
Freight barges and freighters
Ferries
Dredgers

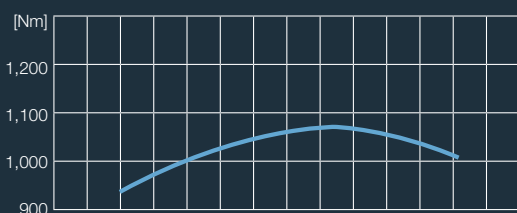


Power charts D2866.

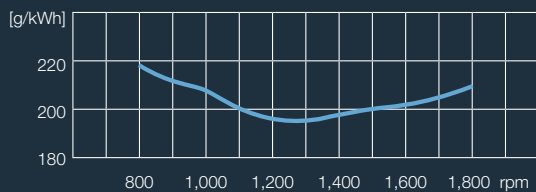
Power



Torque

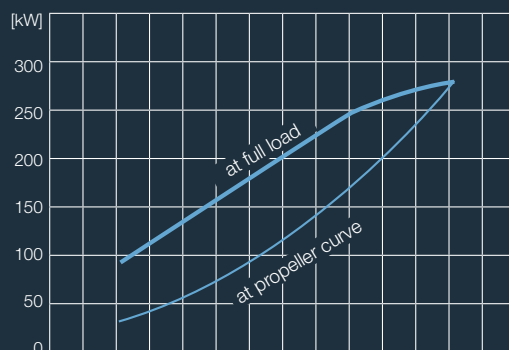


Specific fuel consumption (full load)

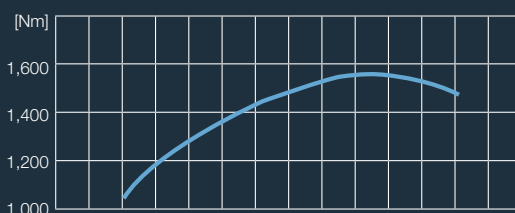


■ D2866 LXE 40 (190 kW, 1,800 rpm)

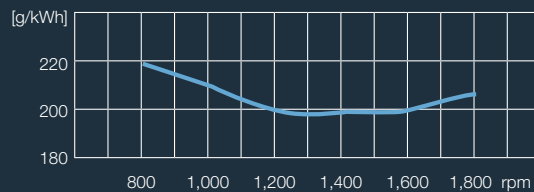
Power



Torque



Specific fuel consumption (full load)



■ D2866 LXE 40 (279 kW, 1,800 rpm)

D 114.496/E · mu 09104 · Printed in Germany

Text and illustrations are not binding.

We reserve the right to make modifications in the course of technical progress.

MAN Nutzfahrzeuge AG
Sales Engines & Components
Vogelweiherstr. 33
90441 Nuremberg

marinemotor@man.eu
www.man-engines.com

