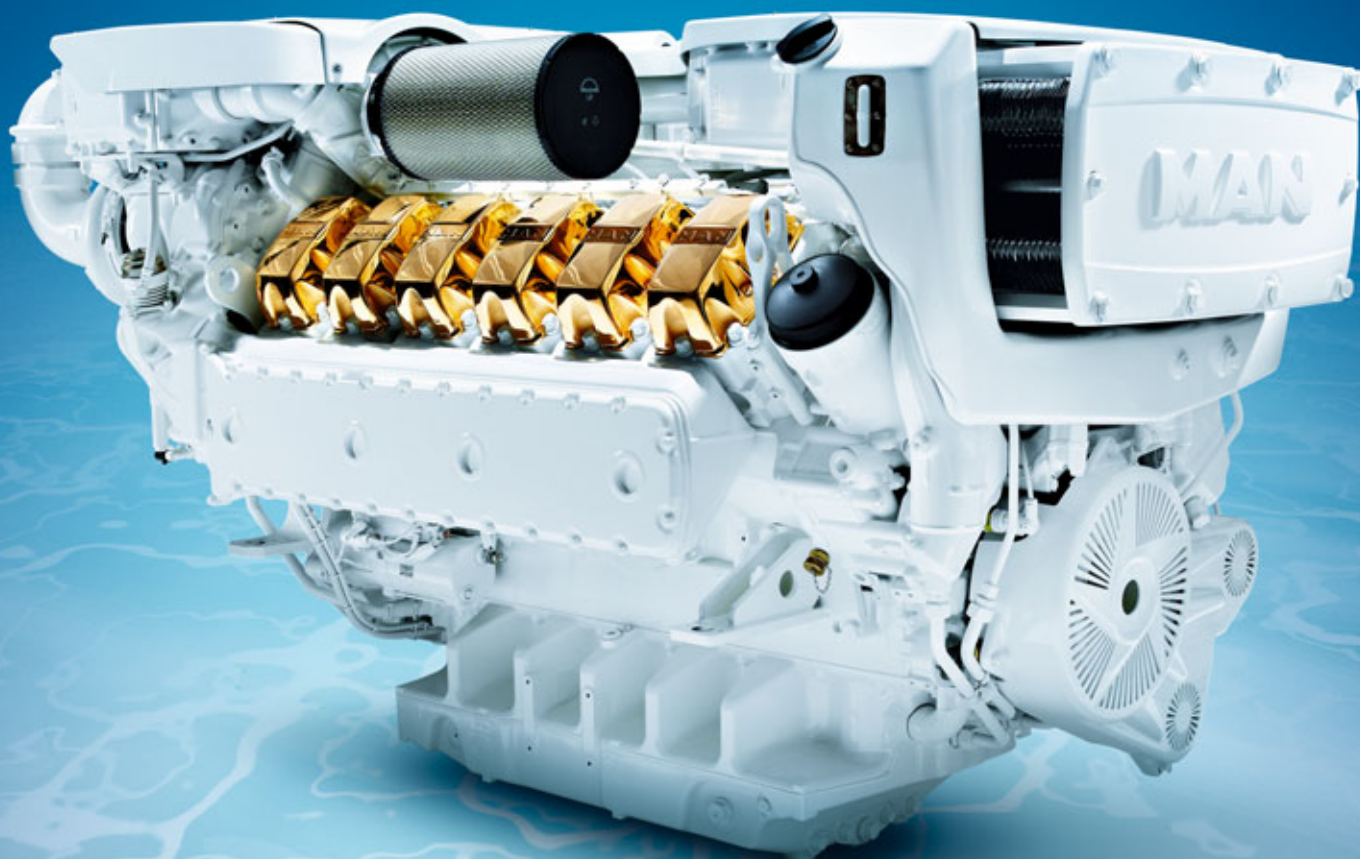


# V12-1400, V12-1550, V12-1650 and V12-1800



**MAN high speed marine engines**  
for light duty applications.

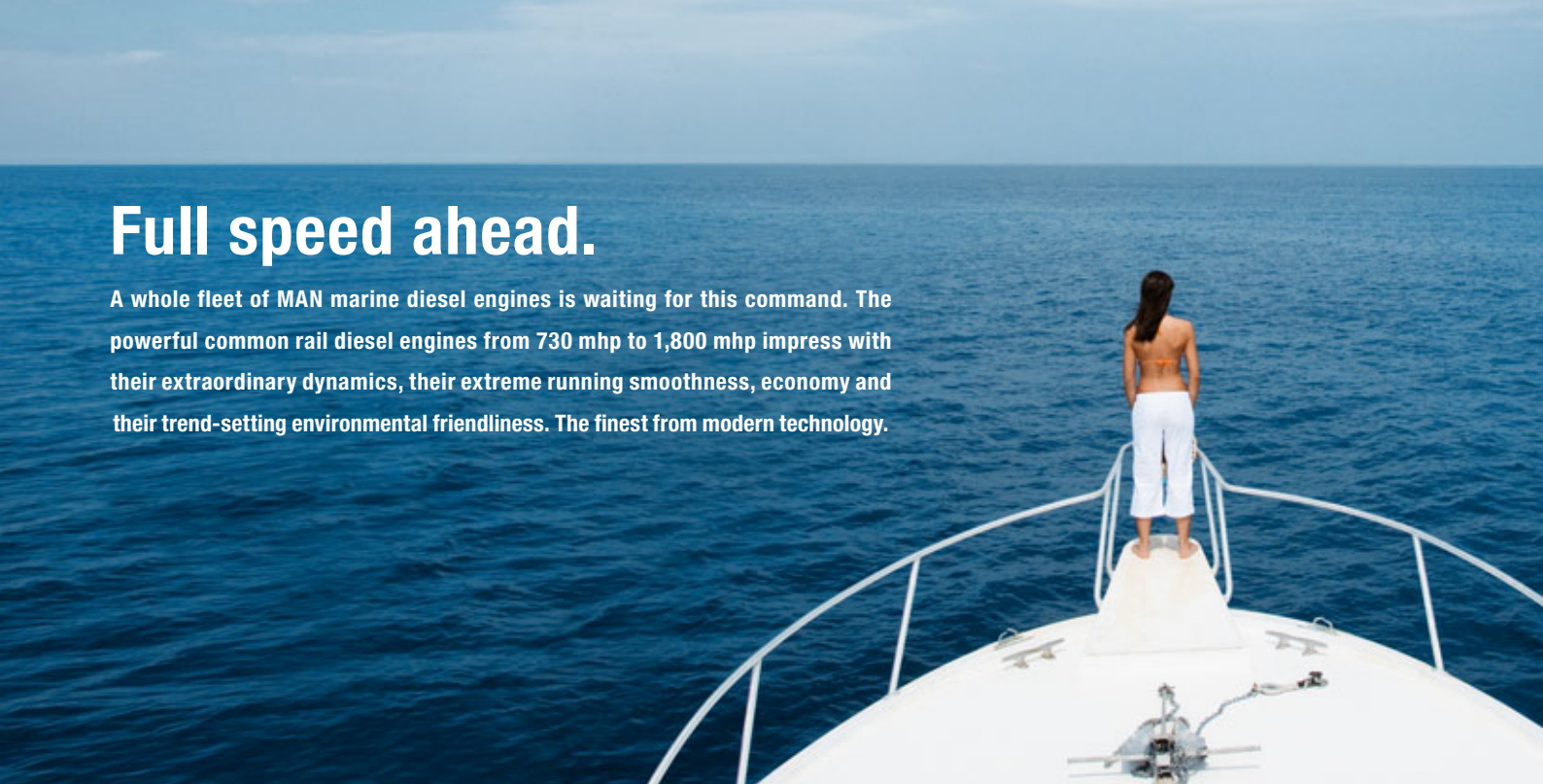
Engineering the Future – since 1758.

**MAN Nutzfahrzeuge**



# Full speed ahead.

A whole fleet of MAN marine diesel engines is waiting for this command. The powerful common rail diesel engines from 730 mhp to 1,800 mhp impress with their extraordinary dynamics, their extreme running smoothness, economy and their trend-setting environmental friendliness. The finest from modern technology.



## Engine description V12-1400, V12-1550, V12-1650 and V12-1800.

<b>Characteristics</b>	<b>V12-1400 / V12-1550</b>	<b>specials V12-1650 / V12-1800</b>
Cylinders and arrangement	12 cylinders in 90° V design	
Operation mode	4-stroke diesel engine watercooled	
Turbocharging	1-stage exhaust turbocharging intercooler	2-stage exhaust turbocharging
Number of valves	4 valves per cylinder	
Fuel system	Common Rail direct fuel injection with electronic control	
Engine lubrication	Closed system with forced feeding, oil cooling and filtering	
Type of cooling	Plate heat exchanger seawater cooled	
Engine electric	Electronic injection control (EDC) Electronic engine monitoring including diagnostic unit	
Exhaust gas status	IMO Tier 2, EPA Tier 2 for private use only. Commercial use upon request. RCD 94/25/EC	
Fuel	DIN EN 590	

<b>Dimensions</b>		<b>V12-1400/-1550</b>	<b>V12-1650/-1800</b>
A-Overall width of engine	mm	1,153	1,153
B-Overall length of engine	mm	2,124	2,087
C-Overall height of engine	mm	1,229	1,275
D-Top of engine to crankshaft centre	mm	825	811
E-Length of engine from front end to edge of flywheel housing	mm	1,631	1,653

For detailed examinations of installation dimensions, please order drawings from our factory.

## MAN engines have outstanding qualities

- High tractive power even at low speeds
- Powerful acceleration and rapid reaction to commands
- High performance combined with low weight
- Compact, space-saving design
- Large operation range owing to low consumption
- Low running costs and long service life
- Low emission values
- World-wide service network with rapid supply of spare parts

## Technical data

Type of engine		V12-1400	V12-1550	V12-1650	V12-1800
Displacement	l	24.24	24.24	24.24	24.24
Maximum output to DIN ISO 3046-1 <sup>1</sup>	kW (mhp)	1,029 (1,400)	1,140 (1,550)	1,213 (1650)	1,324 (1,800)
Rated speed	rpm	2,300	2,300	2,300	2,300
Maximum torque	Nm	4,700	5,200	5,500	6,020
at speed	rpm	1,200 - 2,100	1,200 - 2,100	1,200 - 2,100	1,200 - 2,100
Weight (dry)	kg	2,270	2,270	2,400	2,365
Fuel consumption at rated power	l/h	266	295	306	339
Classifiable		√		√	

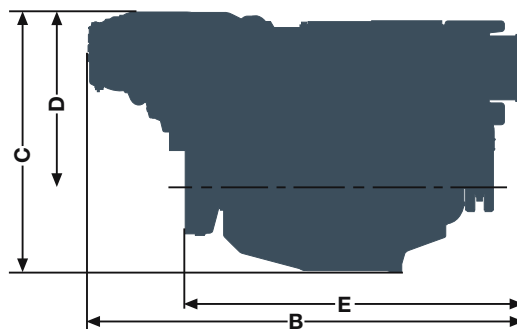
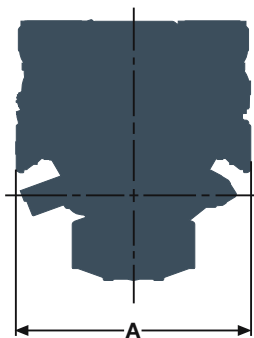
<sup>1</sup> The ratings are only for operation of private yachts.

## Definition of light duty operation

Annual operating hours	< 1,000
Percentage of time at full load	≤ 20%
Average load application	≤ 50%
Particular operation conditions	no wide-open throttle below rated speed

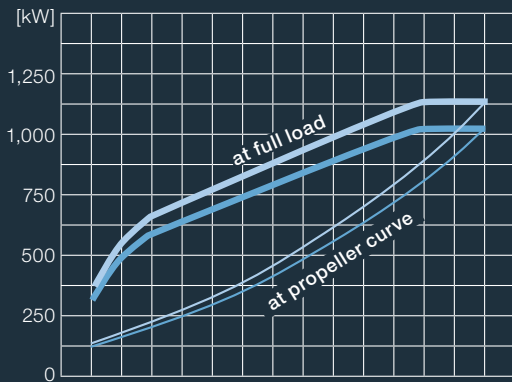
## Typical applications

Escort boats and patrol boats  
Ambulance boats  
Pleasure crafts  
Police boats

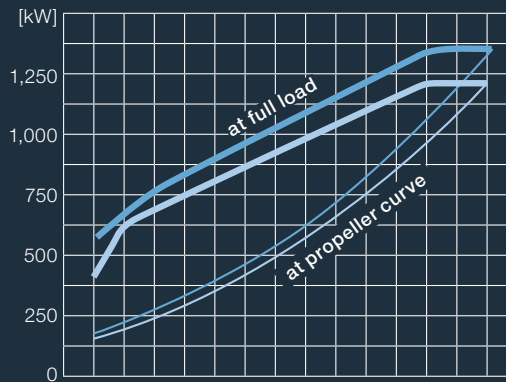


# Power charts V12-1400/1550 and V12-1650/1800.

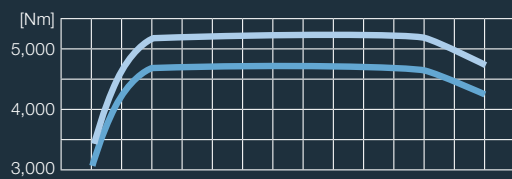
Power V12-1400 / V12-1550



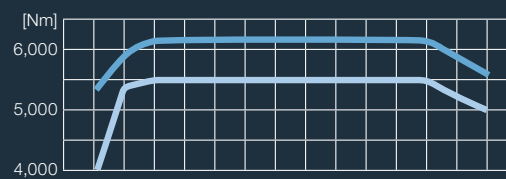
Power V12-1650 / V12-1800



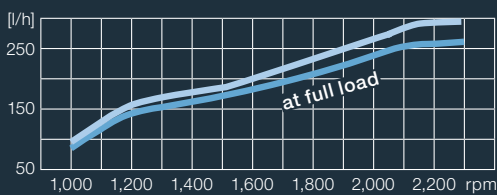
Torque V12-1400 / V12-1550



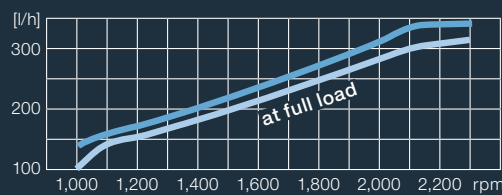
Torque V12-1650 / V12-1800



Fuel Consumption V12-1400 / V12-1550



Fuel Consumption V12-1650 / V12-1800



- V12-1400 with 1,029 kW (1,400 mhp at 2,300 rpm)
- V12-1550 with 1,140 kW (1,550 mhp at 2,300 rpm)

- V12-1800 with 1,324 kW (1,800 mhp at 2,300 rpm)
- V12-1650 with 1,213 kW (1,650 mhp at 2,300 rpm)

D 114.508/E · mu 09104 · Printed in Germany

Text and illustrations are not binding.

We reserve the right to make modifications in the course of technical progress.

MAN Nutzfahrzeuge AG  
Sales Engines & Components  
Vogelweiherstr. 33  
90441 Nuremberg

marinemotor@man.eu  
www.man-engines.com

