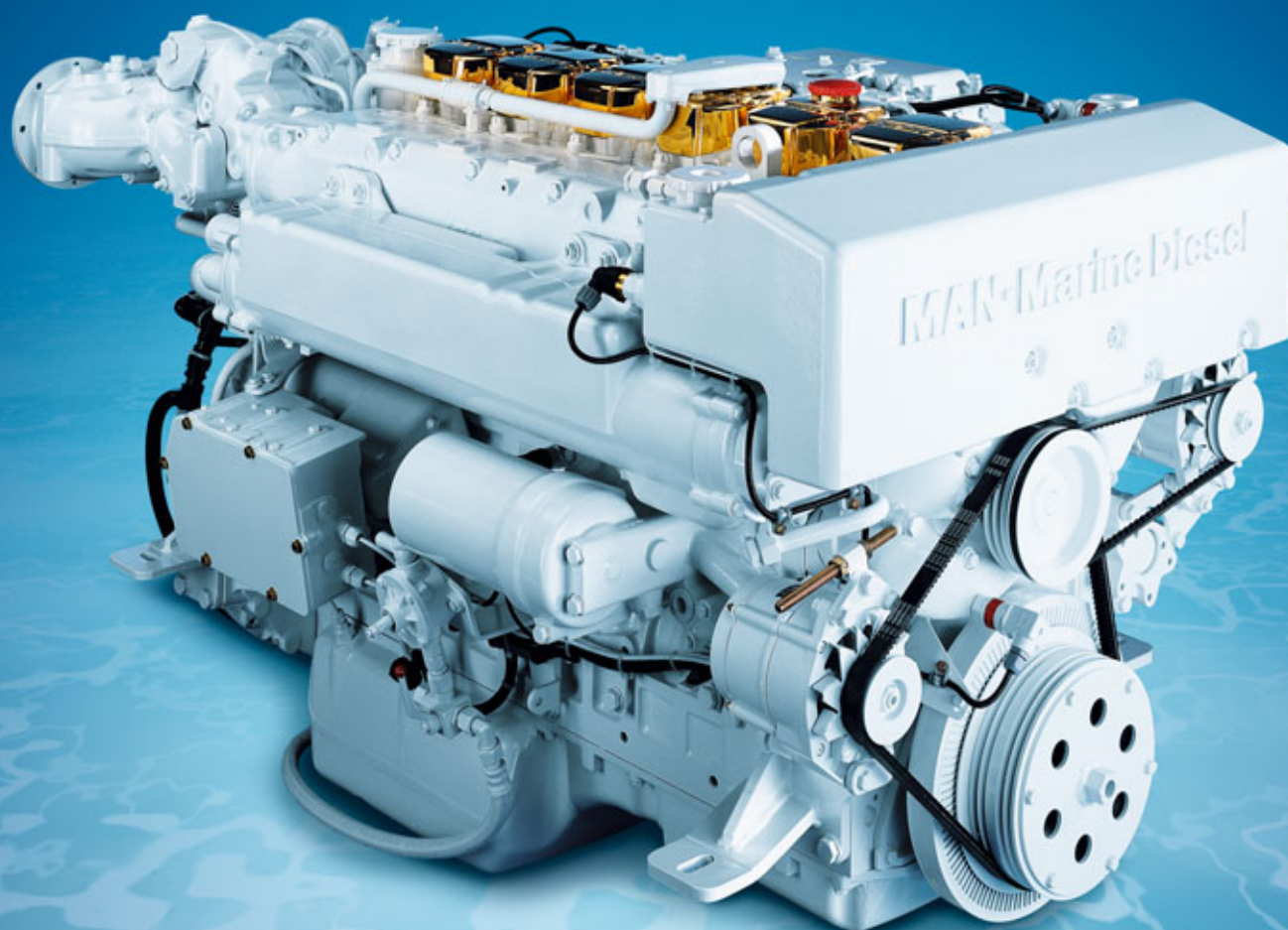


R6-730 and R6-800



MAN high speed marine engines
for light duty applications.

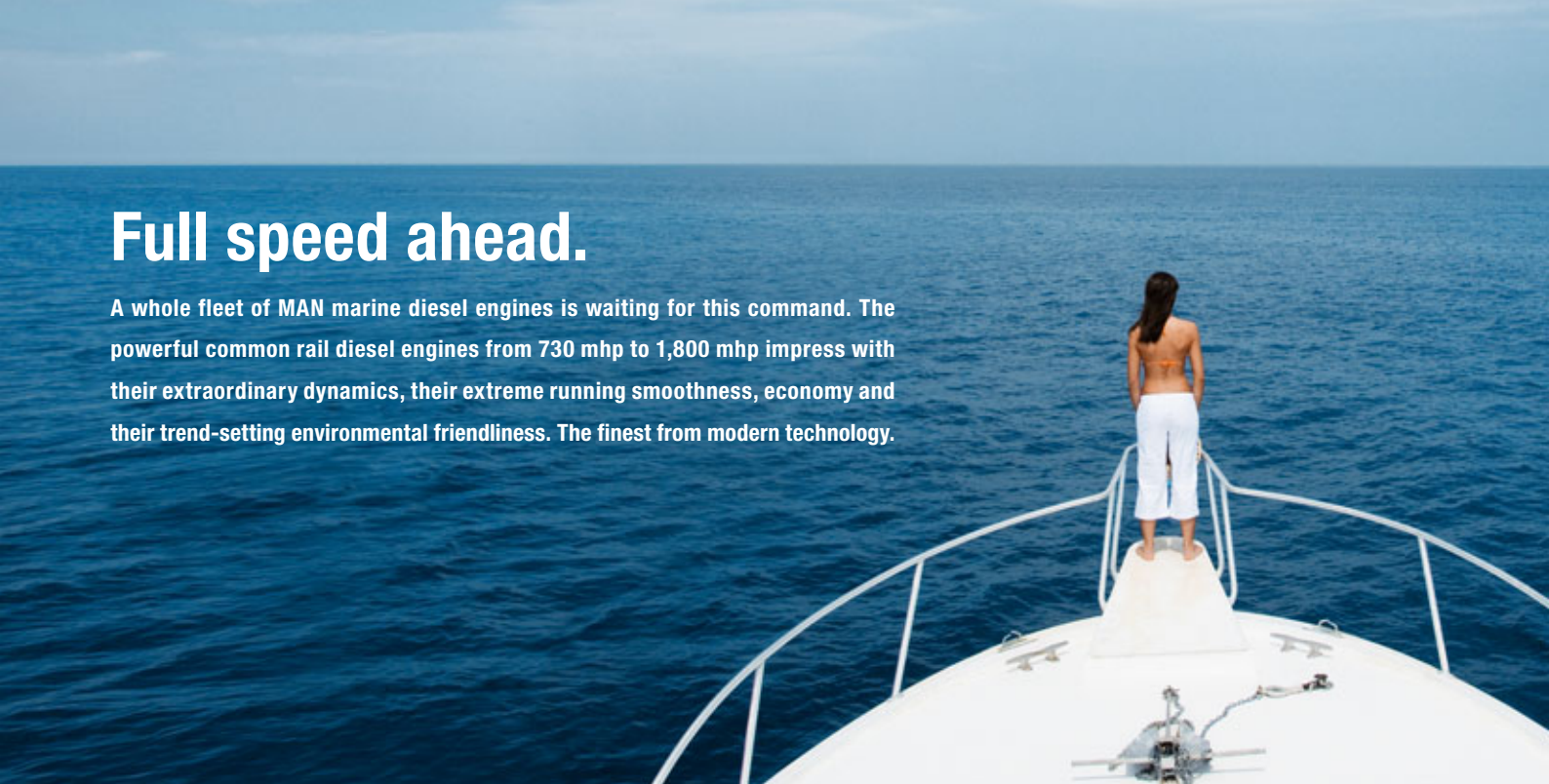
Engineering the Future – since 1758.

MAN Nutzfahrzeuge



Full speed ahead.

A whole fleet of MAN marine diesel engines is waiting for this command. The powerful common rail diesel engines from 730 mhp to 1,800 mhp impress with their extraordinary dynamics, their extreme running smoothness, economy and their trend-setting environmental friendliness. The finest from modern technology.



Engine description R6-730 and R6-800.

Characteristics

Cylinders and arrangement	6 cylinders in-line
Operation mode	4-stroke diesel engine watercooled exhaust turbocharger with intercooler
Number of valves	4 valves per cylinder
Fuel system	Common Rail direct fuel injection with electronic control
Engine lubrication	Closed system with forced feeding, oil cooling and filtering
Type of cooling	Heat exchanger with engine and seawater circuit
Engine electric	Electronic injection control Electronic engine monitoring including diagnostic unit
Exhaust gas status	IMO Tier 2, EPA Tier 2 for private use only. Commercial use upon request. SAV, RCD 94/25/EC
Fuel	DIN EN 590

Dimensions		R6-730/800
A-Overall width of engine	mm	882
B-Overall length of engine	mm	1,605
C-Overall height of engine	mm	977
D-Top of engine to crankshaft centre	mm	655
E-Length of engine from front end to edge of flywheel housing	mm	1,320

For detailed examinations of installation dimensions, please order drawings from our factory.

MAN engines have outstanding qualities

- High tractive power even at low speeds
- Powerful acceleration and rapid reaction to commands
- High performance combined with low weight
- Compact, space-saving design
- Large operation range owing to low consumption
- Low running costs and long service life
- Low emission values
- World-wide service network with rapid supply of spare parts

Technical data

Type of engine		R6-730	R6-800
Displacement	l	12.82	12.82
Maximum output to DIN ISO 3046-1 ¹	kW (mhp)	537 (730)	588 (800)
Rated speed	rpm	2,300	2,300
Maximum torque	Nm	2,512	2,700
at speed	rpm	1,200 - 2,100	1,200 - 2,100
Weight (dry)	kg	1,305	1,305
Fuel consumption at rated power	l/h	145	158

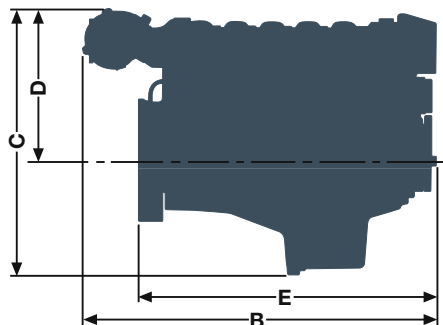
¹ The ratings are only for operation of private yachts.

Definition of light duty operation

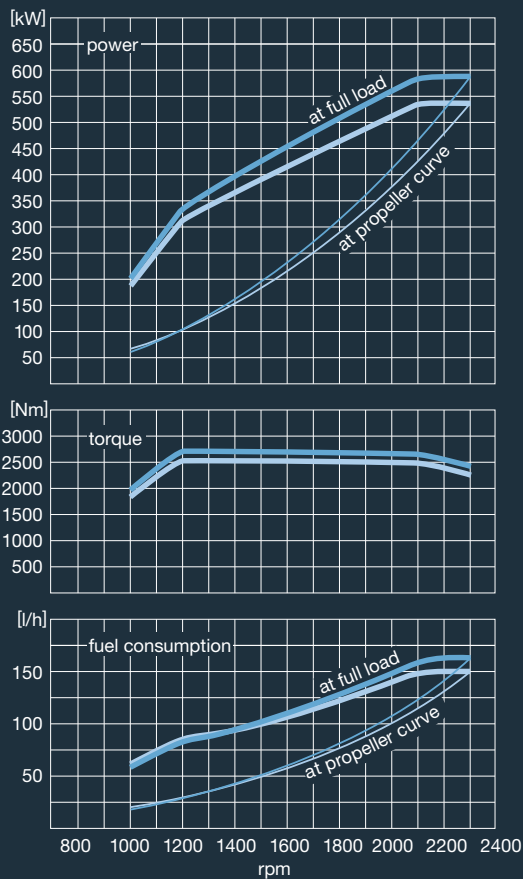
- Annual operating hours < 1,000
- Percentage of time at full load ≤ 20%
- Average load application ≤ 50%
- Particular operation conditions no wide-open throttle below rated speed

Typical applications

- Escort boats and patrol boats
- Ambulance boats
- Pleasure crafts
- Police boats



Power charts R6-730 and R6-800.



- R6 - 800, 588 kW (800 mhp)
- R6 - 730, 537 kW (730 mhp)

D 114.504/E · mu 09104 · Printed in Germany

Text and illustrations are not binding.

We reserve the right to make modifications in the course of technical progress.

MAN Nutzfahrzeuge AG
 Sales Engines & Components
 Vogelweiherstr. 33
 90441 Nuremberg

marinemotor@man.eu
 www.man-engines.com

